



CUNARD

DAILY PROGRAMME

QUEEN MARY 2

VOYAGE NUMBER: M220

Thursday 30 August 2012

Tonight's dress code: Formal

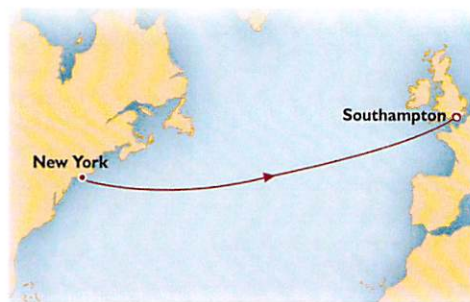
Ladies: Evening dress or other formal attire.

Gentlemen: Tuxedo, black tie or dark suit.

AT SEA EN ROUTE TO SOUTHAMPTON

TIME CHANGE

Please be advised that today at midday the ships clocks will be SET FORWARD BY ONE HOUR. Please set your watches FORWARD at 12 noon today, Thursday 30 August.



MATINEE CLASSICAL CONCERT



Join pianist Rustem Hayroudinoff for an afternoon of classical music.

At 3.00pm

Royal Court Theatre ? decks 2&3, B stairway

FROM THE NAVIGATOR

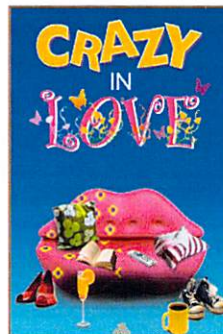
After passing the Grand banks of Newfoundland QUEEN MARY 2 altered to a North-easterly Great Circle course which she will follow over the next few days bound for Bishop Rock at the entrance to the English Channel. QUEEN MARY 2 will also pass abeam of the position of the R.M.S. Titanic. The Titanic lies in the position 41° 43' 55"N 49°56'45"W.



TONIGHT'S FEATURED ENTERTAINMENT

CRAZY IN LOVE FEATURING THE ROYAL CUNARD SINGERS & DANCERS

'Crazy in Love' highlights, with satirical humour, the eternal dilemma between men and women, the nitty gritty of life and the sparkle of romance. Featuring cameo scenes from the beginning of the relationship cycle, through comedy, heartbreak, reconciliation, absurdity and fun. 'Crazy In Love' is a show for anyone who ever fell in love – or is planning to! Presented by your Entertainment Director, Keith Maynard.



At 8.45pm and 10.45pm

Royal Court Theatre ? decks 2 & 3, B stairway

Madam Butterfly is an elegant and powerful RealD and Royal Opera House production, directed for the stage by acclaimed directors Moshe Leiser and Patrice Caurier. The production features a supremely talented cast, superbly performing this gripping drama to Puccini's haunting score.

At 8.30pm

Illuminations ? , deck 3, A or B stairway

THE OPERA:

MADAME BUTTERFLY IN 3D

TONIGHT IN THE QUEENS ROOM

BIG BAND BALL

With the combined Queens Room and Royal Court Theatre Orchestras under the musical direction of Joey Mix, with vocalist

Michel Chartier, and hosted by your

Social Hostess, Melanie Jones. At 11.00pm

Featuring a dance performance from our International Dance Couple, Olena & Dan.

From 10.00pm to 12.00am in the Queens Room deck 3, D stairway

SUNRISE AND SUNSET

Sunrise: 5.21am / Sunset: 7.03pm

NAUTICAL FACT OF THE DAY

FATHOM

Although a fathom is now a nautical unit of length equal to six feet, it was once defined by an act of Parliament as "the length of a man's arms around the object of his affections." The word derives from the Old English Faethm, which means "embracing arms."

In Today's

DISCOVER...

...getting the most from your voyage

Have your professional portrait taken



Canyon Ranch Spa Specials



Rolf Harris, A Life In Art

TODAY'S ACTIVITIES

| | | |
|------|---|--|
| 6am | 6.00am CATCH UP WITH KEITH TV show with your Entertainment Director, Keith Maynard TV Ch. 41 (repeated continuously until 12.00pm) | 11.00am MASONIC GATHERING The Boardroom, deck 9, A stairway (until 11.45am) |
| | 8.00am CANYON RANCH FITNESSO Power Deck walk - 1 mile brisk walk & talk. Previous sign-up required. | 11.00am CANYON RANCH LECTUREO Healing power of Seaweed - Seaweed has been used for hundreds of years, relieving issues such as Arthritis, Inflammation and body ph balance. Learn more about the healing power of seaweed. |
| 8am | 8.30am CATHOLIC MASS Illuminations, deck 3, A or B stairway (until 9.00am) | 11.00am WINTER GARDEN, DECK 7, B STAIRWAY (until 11.45am) |
| | 9.00am CROSSWORD PUZZLE & QUIZ AVAILABLE 📖 Library, deck 8 forward, A stairway | 11.00am ISTUDY: NEXT STEPS WORKSHOP Introduction to Microsoft Powerpoint 2010, make your own presentation from scratch. Sign up 15 minutes before class. A \$25 fee applies. |
| | 9.00am CANYON RANCH FITNESSO Morning Stretch- We all need a flexible body. Previous sign-up required. | 11.00am CONNEXIONS ROOM 6, DECK 2, A STAIRWAY (until 12.00pm) |
| | 9.30am UK IMMIGRATION INSPECTION For decks 6, 8 & 11. Please bring your passport and ship identity card. | 11.00am BALLROOM DANCE CLASS Tango, with on board dance couple, Olena & Dan. |
| 9am | 9.30am BRITANNIA RESTAURANT, DECK 3, C STAIRWAY (until 12.00pm) | 11.00am QUEENS ROOM, DECK 3, D STAIRWAY (until 11.45am) |
| | 9.30am BEGINNERS' BRIDGE CLASS Atlantic Room, deck 11, A stairway (until 10.15am) | 11.00am CUNARD INSIGHTS LECTURE Recorded and broadcast on TV Ch. 42 from 5.00pm onwards |
| | 9.30am HOOPLAH TOURNAMENT 🎪 Pavilion Pool Area, deck 12, B stairway (until 10.15am) | 11.00am 'STARDUST MELODIES' The story of twelve of America's most popular songs. Presented by maritime historian Will Friedwald. |
| | 9.45am ISTUDY: SEMINAR Repeated from yesterday - iPads, iPads & iPhones: a visual introduction (limited to 27 participants, first come first serve basis) | 11.15am ILLUMINATIONS, DECK 3, A OR B STAIRWAY (until 11.45am) |
| | 10.00am FLOWER ART CLASS Join our Florist today for an introduction to flower arranging and mixed flowers. Learn how to arrange centrepieces and make rose corsages and buttonholes. A nominal fee applies. | 11.15am QUIZ CORNER 🎲 Hosted by the entertainment staff. |
| | 10.00am ART TALK: ROLF HARRIS, A LIFE IN ART Your Art Consultants present the life and art of one of Britain's most popular and best loved artists - Rolf Harris. | 12.00pm GOLDEN LION PUB, DECK 2, C STAIRWAY (until 12.00pm) |
| | 10.00am CANYON RANCH LECTUREO Age and Exercise - The Fountain of Youth Recaptured through Exercise. | 11.30am PAVILION POOL AREA, DECK 12, B STAIRWAY (until 1.15pm) |
| | 10.00am WATERCOLOUR ART CLASS There will be a one-time fee of \$35 for supplies. Numbers are limited to 25 guests. | 12.00pm EIGHT BELLS Grand Lobby, deck 3, C stairway |
| | 10.00am CUNARD INSIGHTS LECTURE 'The Only Way To Cross', Part III: Maxtone-Graham continues his discussion of life aboard the North Atlantic Liners. | 12.00pm NAVIGATIONAL ANNOUNCEMENT Public Address System |
| 10am | 10.00am DOUBLE YOUR POINTS PROMOTION Empire Casino, deck 2, B or C stairway (until 12.00pm) | 12.00pm TIME CHANGE Please be advised that today at midday the ships clocks will be SET FORWARD BY ONE HOUR. Please set your watches FORWARD at 12 noon today, Thursday 30 August. |
| | 10.00am CANYON RANCH FITNESSO Yoga - all levels. Fitness pass and previous sign-up required. | 1.00pm LINE DANCING CLASS Queens Room, deck 3, D stairway (until 1.45pm) |
| | 10.30am INTERMEDIATE BRIDGE CLASS Atlantic Room, deck 11, A stairway (until 11.15am) | 1.15pm COMPLIMENTARY BLACKJACK LESSONS Empire Casino, deck 2, B or C stairway |
| | 10.30am SOLO TRAVELLERS' MORNING COFFEE An informal gathering hosted by our Gentlemen hosts. | 1.15pm PUBTIME MELODIES With pianist and singer Patrick Patton. |
| | 10.30am MORNING TRIVIA 🎲 Golden Lion Pub, deck 2, C stairway (until 11.15am) | 1.15pm GOLDEN LION PUB, DECK 2, C STAIRWAY (until 2.00pm) |
| | 10.30am PADDLE TENNIS TOURNAMENT 🎾 Tennis court, deck 13, A stairway (until 11.15am) | 1.15pm LUNCHTIME MELODIES With pianist Russell Holmes. |
| | 10.30pm BINGO TICKET SALE Outside the Queens Room, deck 3, D stairway (until 1.45pm) | 1.30pm CHART ROOM, DECK 3, C STAIRWAY (until 2.00pm) |
| 11am | 11.00am H STERN FASHION SHOW & SEMINAR Our H.Stern Manager heads this informative Seminar followed by the Fashion Show. Come and find out why this jewellery adorns top Celebrities in events such as the Oscars. | 1.30pm POOLSIDE MUSIC WITH SERIOUS SOUNDS Pavilion Pool, deck 12, B stairway (until 2.30pm) |
| | Chart Room, deck 3, C stairway (until 11.45am) | 1.15pm BOOK SIGNING: WILL FRIEDWALD Bookshop deck 8, A stairway |
| | | 2.00pm CANYON RANCH FITNESSO Calisthenics - Use your own body weight to exercise. Fitness Pass and previous sign-up required. |
| | | 2.00pm KNIGHTSBRIDGE ROOM, DECK 1, C STAIRWAY (until 2.45pm) |
| | | 2.00pm SNOWBALL JACKPOT BINGO Queens Room, deck 3, D stairway (until 2.45pm) |
| | | 2.00pm CANYON RANCH LECTUREO Living with Arthritis - Learn about the most common forms of arthritis and how with a proper diet and exercise you can rejuvenate affected joints and relieve inflammation and pain. |
| | | 2.00pm CONNEXIONS ROOM 5, DECK 2, A STAIRWAY (until 2.45pm) |
| | | 2.00pm COMPLIMENTARY BLACKJACK Playing session, Blackjack table opposite the Golden Lion Pub |
| | | 2.30pm EMPIRE CASINO, DECK 2, B OR C STAIRWAY |
| | | 2.30pm FRIENDS OF BILL W. The Boardroom, deck 9, A stairway (until 3.15pm) |
| | | 2.30pm BOOK SIGNING: JONH MAXTONE-GRAHAM Bookshop deck 8, A stairway |
| | | 2.30pm UK IMMIGRATION INSPECTION For decks 6, 8 & 11. Please bring your passport and ship identity card |
| | | 2.30pm BRITANNIA RESTAURANT, DECK 3, C STAIRWAY (until 4.30pm) |

DISCOVER...

...getting the most from your voyage

In today's Discover... we look at ways you can make the most of your time with us. Be it taking advantage of special offers from the Spa or Casino, finding a unique souvenir at the Bookshop, or finding a new passion during Martini Mixology.

MARTINI

MIXOLOGY

Learn the secrets of Martini making from our expert mixologists and enjoy a glimpse into the exclusive world of Molecular Mixology! Please register in advance by telephoning the Commodore Club on ext. 29000 or by contacting any bar server. A nominal charge of \$20 plus 15% service per person will apply. **At 3.00pm in the Commodore Club, deck 9, A stairway**



CLICQUOT CHAMPAGNE BAR



The Veuve Clicquot Champagne Bar is the perfect setting for a chilled glass of your favourite bubbly. Equally enjoyable on a vibrant formal evening or a leisurely afternoon the knowledgeable staff are there to guide you in all things Veuve Clicquot. If you want more than a simple glass of Champagne the bar staff will be happy to host an exclusive tasting of the full range of Veuve Clicquot Champagne complimented by deluxe canapes specially created by our Executive Chef. Tasting events can be tailored to your requirements, please do not hesitate to contact a member of bar staff for further details.



ART TALK: ROLF HARRIS, A LIFE IN ART

Join us in the gallery this morning, as your Art Consultants present to you the life and art of one of Britain's most popular and best loved artists - Rolf Harris. Learn about Rolf's inspiration and painting techniques, whilst hearing humorous tales about his rise to fame. In conjunction with this talk, Clarendon Fine Art is exhibiting Rolf Harris' latest collection of brand new Fine Art Hand-Signed Limited Editions. This collection promises to sell out within a matter of weeks - take the opportunity to own one of these final, exclusive pieces and invest in some of the most collectable Fine Art on the market. This sensational exhibition will be on display for the remainder of the day.



From 10.00am to 10.45am in the Queen Room, deck 3, aft

CANYON RANCH SPA SPECIALS



CANYON RANCH MASSAGE

50 minutes \$99 at 8.00am, 9.00am and 7.00pm only. Usually \$138.

REVITALIZING HYDRATION FACIAL

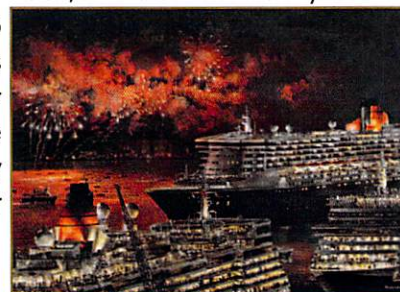
50 minutes \$125, usually \$169.

Visit us on Decks 7 & 8, or dial 27008/9 on your stateroom telephone.

THE THREE QUEENS DVD

On June 5th 2012, the country celebrated Her Majesty the Queen's Diamond Jubilee. With years of heritage and connections to the Royal Family, Cunard paid their own tribute by organising the largest celebration of this historic day outside London; the arrival of the Three Queens together for the very first time in their home port of Southampton. This programme not only charts the history of the iconic Cunard Line but also documents the events of this magnificent occasion, from the arrival at daybreak of the flagship of the fleet, *QUEEN MARY 2*, to the fireworks and departure of the Three Queens later that night. Extensive footage, some never before seen and interviews with the key people involved in the planning of this wonderful day come together to form a unique and spectacular event. All for an amazing price of \$14.99

Bookshop, deck 8, A stairway



HOT SEAT SLOTS

COULD YOU BE SITTING IN THE HOT SEAT?

Random wins while playing your favourite machines. Hourly draws throughout the night. If your seat is chosen – You Win! It's as simple as that. Tonight only from 9.00pm to 11.00pm in Empire Casino. **Empire Casino, deck 2, B or C stairway**

COMPLIMENTARY GAMING LESSONS

Let us teach you how to play Blackjack, Roulette, Three Card Poker and other games available in the **QUEEN MARY 2** Empire Casino. From 1.15pm join your friendly Casino Host Kati.

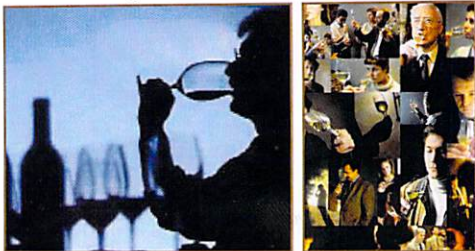


MEET THE SOMMELIERS

Ask that one question you always wanted to ask about wine.

Ask about the wine list on board. What are we doing during the wine tasting seminar? What is the Wine Line?

Today from 3.00pm and 4.00pm
Todd English restaurant 8 deck aft



CHAUFFEUR CAR SERVICE

Continue your journey in style with a private car arranged by Cunard. Choose from a sedan, limousine or passenger van to transfer you from the pier direct to your destination.

Tour Office Deck 2, Grand Lobby

CAPTURE THE MAGIC OF YOUR VOYAGE WITH A FORMAL PORTRAIT

You're having a fantastic time on your voyage. Why not make the moment last forever with a formal portrait? This is a great keepsake you'll want to take home with you. **Studios are open from 5.30pm to 6.30pm, 7.30pm to 9.00pm and 9.45pm to 10.45pm on decks 2 and 3 between B and C stairway.**

24-HOUR PHOTO KIOSK

View your formal portraits 24 hours a day at our touch screen photo kiosks located in the Photo Gallery on Deck 3

EXCLUSIVE KEEPSAKE PHOTOBOOK

Share your voyage memories with family and friends with this new and exclusive keepsake Photobook, priced at \$149.95. Its personalised with the professional photograph of your choice and delivered directly to your designated address.



FANTASTIC PERFUME OFFERS

Another superb one day only promotion not to be missed. Molton Brown sets for today only are Buy One Get One Free plus all L'Oréal products are 30% off. Visit the Mayfair Shops today and treat yourselves. **Mayfair Shops, deck 3, Grand Lobby**

TRANSATLANTIC UNVEILING

Come to the tables this morning for our launch of our BRAND NEW Transatlantic 2012 Logo Collection. We have some great deals and savings that are not to be missed. You can't get these products any where else, at any other time so don't miss your chance to own a piece of Cunard history

H.STERN FASHION SHOW & SEMINAR

Our H.Stern Manager heads this informative Seminar followed by the Fashion Show. Come and find out why this jewellery adorns top Celebrities in events such as the Oscars.

At 11.00am in the Chart Room, deck 3, C stairway



QUINTESSENTIAL TRANSATLANTIC CROSSINGS 2013

Once a grand ocean voyage was, quite simply, the only way to travel between the two great continents. Today, only one ship regularly reinterprets this classic crossings: **QUEEN MARY 2**

Westbound Crossings (Southampton - New York)

25 May, 24 June, 20 July, 8 August, 2 September, 8 October, 12 November, 15 December

Eastbound Crossings (Southampton - New York)

3 January, 3 May, 1 June, 6 July, 27 July, 15 August, 22 September, 27 October, 19 November

Westbound Crossings (Hamburg - Southampton - New York)

23 May, 22 June, 31 August, 6 October, 10 November

Eastbound Crossings (New York - Southampton - New York)

3 May, 1 June, 15 August, 22 September, 27 October

For more details, visit Barrie or Dragana at the Voyage Sales Office on Deck 2, opposite the Royal Court Theatre (Port side) or telephone extension 22347 & 22339 to arrange a private appointment.



TODAY'S ACTIVITIES

2pm

2.30pm **WATERCOLOUR ART CLASS**
A one-time fee of \$35 for supplies. Limited to 25 guests.
Chelsea Room, deck 1, B stairway (until 4.30pm)

2.30pm **SILLY BOWLING TOURNAMENT** 🎳
Pavilion Pool Area, deck 12, B stairway (until 3.15pm)

2.30pm **DUPLICATE BRIDGE**
Atlantic Room, deck 11, A stairway (until 4.30pm)

2.30pm **HOSTESS CORNER: NEEDLEWORK & KNITTING**
Please note, this is not a class.
Champagne Bar, deck 3, Grand Lobby (until 3.30pm)

3.00pm **ISTUDY: FIRST STEPS WORKSHOP**
Beginners Apple Mac computers with Lion OS
ConneXions Room 6, deck 2, A stairway (until 4.00pm)

3.00pm **MATINEE CLASSICAL CONCERT**
Royal Court Theatre, decks 2 & 3, B stairway (until 3.45pm)

3.00pm **CANYON RANCH LECTURE** 🎤
Oxygen Facial – Discover the fine line between therapist and surgeon.
ConneXions Room 5, deck 2, A stairway (until 3.45pm)

3.00pm **DARTS COMPETITION** 🎯
Golden Lion Pub, deck 2, C stairway (until 3.30pm)

3.00pm **TEXAS HOLD'EM TOURNAMENT**
Empire Casino, deck 2, B or C stairway (\$60 tournament fee)

3.00pm **CANYON RANCH FITNESS** 🏋️
Compact Core - Strengthen & shape your middle. Fitness Pass and previous sign-up required.
Knightsbridge Room, deck 1, C stairway (until 3.45pm)

3pm

3.00pm **MARTINI MIXOLOGY**
Please register in advance by telephoning the Commodore Club on ext. 29000 or by contacting any bar server. A nominal charge of \$20 plus 15% service per person will apply.
Commodore Club, deck 9, A stairway (until 3.45pm)

3.30pm **CUNARD INSIGHTS LECTURE**
Recorded and broadcast on TV Ch. 42 from 5.00pm onwards
We chose to go to the Moon – "The Space Race – The way to the Moon?" Presented by Astronomy and Astronautics lecturer, Andy Green.
Illuminations 🌟, deck 3, A or B stairway (until 4.15pm)

3.30pm **AFTERNOON TEA**
Featuring the Sunrise String Quartet.
Queens Room 🌟, deck 3, D stairway (until 4.30pm)

3.30pm **BUFFET AFTERNOON TEA**
Kings Court, Lotus, deck 7 (until 4.30pm)

3.30pm **COMPLIMENTARY GOLF COMPETITION** 🏌️
125 Yards closest to the pin. Places are limited.
The Fairways, deck 12, B stairway (until 4.15pm)

4.00pm **CANYON RANCH FITNESS** 🏋️
Aerobitone - Aerobics & Toning. Fitness Pass and previous sign-up required.
Knightsbridge Room, deck 1, C stairway (until 4.45pm)

4pm

4.30pm **ISTUDY: FIRST STEPS WORKSHOP**
Using Your iPad: Sign up 15 minutes before class, max 15 guests (\$15 fee or \$20 including iPad loan - yesterdays repeat)
ConneXions Room 6, deck 2, A stairway (until 5.30pm)

4.30pm **AFTERNOON TRIVIA** 🎲
Golden Lion Pub, deck 2, C Stairway (until 5.15pm)

4.30pm **BEAT THE GOALIE TOURNAMENT** 🏒
Sports deck deck 13, A stairway (until 5.15pm)

5.00pm **FILM: 'THE HUNGER GAMES'**
In a not-too-distant future, North America has collapsed, weakened by drought, fire, famine, and war to be replaced by Panem, a country divided into the Capitol and 12 districts. Each year two young representatives from each district are selected by lottery to participate in The Hunger Games. Part entertainment, part brutal intimidation of the subjugated districts, the televised games are broadcast throughout Panem. The 24 participants are forced to eliminate their competitors, literally, with all citizens required to watch. Starring Jennifer Lawrence, Josh Hutcherson, Liam Hemsworth. Directed by Gary Ross. Rated PG-13; 142 minutes.
Illuminations 🌟, deck 3, A or B stairway

5pm

5.00pm **'LIVE @ 5' RADIO SHOW**
For requests or messages dial 23015. TV Ch. 41 (until 7.00pm)

5.00pm **FRIENDS OF DOROTHY GBLT**
Commodore Club (starboard side), deck 9, A stairway (until 5.45pm)

5.15pm **HARPIST FIONA MCGEE**
Chart Room, deck 3, C stairway (until 6.00pm)

5.15pm **PIANIST RUSSELL HOLMES**
Golden Lion Pub, deck 2, C stairway (until 6.00pm)

6.30pm **HARPIST FIONA MCGEE**
Chart Room, deck 3, C stairway (until 7.15pm)

7.15pm **SINGER & PIANIST PATRICK PATTON**
Golden Lion Pub, deck 2, C stairway (until 8.00pm)

7.30pm **PIANIST GEZA TOROCSIK**
Commodore Club, deck 9, A stairway (until 8.30pm)

7.30pm **PIANIST RUSSEL HOLMES**
Chart Room, deck 3, C stairway (until 8.30pm)

7.45pm **HARPIST FIONA MCGEE**
Winter Garden, deck 7, B stairway (until 8.30pm)

8.00pm **EARLY EVENING TRIVIA** 🎲
Hosted by the entertainment staff.
Golden Lion Pub, deck 2, C stairway (8.30pm)

8.30pm **THE OPERA: MADAME BUTTERFLY IN 3D**
Madam Butterfly is an elegant and powerful RealD and Royal Opera House production, directed for the stage by acclaimed directors Moshe Leiser and Patrice Caurier. The production features a supremely talented cast, superbly performing this gripping drama to Puccini's haunting score.
3D glasses will be available from 30 minutes before the showing and will be collected afterwards at the exit of Illuminations. Programmes will be available at the doors.
Illuminations 🌟, deck 3, A or B stairway (until 11.30pm)

8.45pm **PRODUCTION SHOW: CRAZY IN LOVE**
Royal Court Theatre 🌟, decks 2 & 3, B stairway (until 9.30pm)

9.00pm **PRE-RECORDED STRICT TEMPO MUSIC**
Queens Room 🌟, deck 3, D stairway (until 10.00pm)

9.00pm **HOT SEATS SLOTS**
Empire Casino, deck 2, B or C stairway (until 11.00pm)

9.30pm **INTERNATIONAL BAND, SERIOUS SOUNDS**
G32, deck 3, D stairway (until 10.30pm)

9.30pm **THE JAZZ CLUB**
Swing-along jazz favourites with the Mark Hodgson Trio.
Chart Room, deck 3, C stairway (until 12.30am)

9.30pm **SINGER & PIANIST PATRICK PATTON**
Golden Lion Pub, deck 2, C stairway (until 10.00pm)

10.00pm **BIG BAND BALL**
Dance to the combined talents of the Royal Court Theatre Orchestra and the Queens Room Orchestra under the direction of Joey Mix, with vocalist Michel Chartier. At 11.00pm Featuring a dance performance from our International Dance Couple, Olena & Dan.
Queens Room 🌟, deck 3, D stairway (until 12.00am)

10.00pm **BLANK SPACES** 🎭
Hosted by the entertainment staff.
Golden Lion Pub, deck 2, C stairway (10.45pm)

10.00pm **COCKTAIL PIANIST GEZA TOROCSIK**
Commodore Club, deck 9, A stairway (until 12.00am)

10.30pm **DJ CHRIS BACK TO THE 70'S**
G32, deck 3, D stairway (until 11.30pm)

10.45pm **PRODUCTION SHOW: CRAZY IN LOVE**
Royal Court Theatre 🌟, decks 2 & 3, B stairway (until 11.30pm)

10.45pm **SINGER & PIANIST PATRICK PATTON**
Golden Lion Pub, deck 2, C stairway (until 12.00am)

11.30pm **INTERNATIONAL BAND, SERIOUS SOUNDS**
G32, deck 3, D stairway (until 12.30am)

12.00am **DANCE MUSIC FOR ENTHUSIASTS**
Queens Room 🌟, deck 3, D stairway (until 12.30am)

12.30am **DJ CHRIS**
G32, deck 3, D stairway (until late)

5pm

6pm

7pm

8pm

9pm

10pm

11pm

12am

SHIPBOARD INFORMATION

THE MOST FAMOUS OCEAN LINERS IN THE WORLD

RESTAURANTS

QUEENS GRILL, PRINCESS GRILL AND BRITANNIA CLUB

| | |
|-----------------|------------------|
| Breakfast | 8.00am to 9.30am |
| Lunch | 1.00pm to 2.30pm |
| Dinner | 6.30pm to 9.00pm |

BRITANNIA RESTAURANT

| | |
|--------------------|---------------------------|
| Breakfast | 8.00am to 9.30am |
| Lunch | 1.00pm to 2.30pm |
| Early Dinner | 6.00pm, last order 6.30pm |
| Late Dinner | 8.30pm, last order 9.00pm |
| Wine Line | 10.00am to 4.00pm |

pre-order your wine for the voyage by calling 22062.

TODD ENGLISH

A la carte charges apply. For reservations please dial 28026 between 10.00am & 4.00pm.

| | |
|--------------|------------------|
| Lunch | 1.00pm to 2.30pm |
| Dinner | 6.00pm to 9.30pm |

KINGS COURT BUFFET

| | |
|--|-------------------|
| Continental Breakfast | 4.00am to 6.30am |
| Chef's Galley: Healthy Corner | 6.30am to 10.30am |
| Full Breakfast | 6.30am to 11.30am |
| Chef's Galley: Burger & Sandwich Station | 11.30am to 3.00pm |
| Lunch | 11.30am to 3.00pm |
| Afternoon Snack | 3.00pm to 5.30pm |
| Buffet Dinner: Carvery | 5.30pm to 11.00pm |
| Late Snack | 11.00pm to 4.00am |

BOARDWALK CAFÉ

Outside on deck 12, D stairway, open weather permitting.

| | |
|-----------------------------|------------------|
| Fast Food Grill Items | 1.00pm to 3.00pm |
|-----------------------------|------------------|

KINGS COURT SPECIALITY A LA CARTE

A \$10 cover charge applies. For reservations please dial 25056.

| | |
|---|--------------------------------|
| Lotus | 7.00pm to 9.00pm |
| An Asian inspired tasting menu full of flavours from the east | |
| La Piazza | 7.00pm to 9.00pm |
| Fine Italian a la carte dining, our chefs prepare a fantastic Mediterranean feast. | |
| Chef's Galley | Demonstration begins at 7.00pm |
| This evening our chefs will explain and prepare popular Thai dishes. Please be advised that there is a minimum participation and as a courtesy to fellow guests please be on time. Bookings will close at noon today to enable preparation. | |

BAR AND LOUNGES

| | |
|---|-------------------------------|
| Commodore Club deck 9, A stairway | 10.00am to late |
| Pavilion Pool Bar deck 12, B stairway | 9.00am to 7.00pm |
| Winter Garden deck 7, B stairway | 11.00am to 9.00pm |
| Champagne Bar deck 3, Grand Lobby | 11.00am to 12.00am |
| Chart Room deck 3, C stairway | 10.00am to late |
| Empire Casino Bar deck 2, C stairway | 11.00am to close |
| Golden Lion Pub deck 2, C stairway | 10.00am to late |
| Pub Lunch | 11.30am to 2.30pm |
| Sir Samuel's (deck 3, C stairway) | 7.00am to 12.00am |
| Light Snacks served throughout the day until 5.00pm | |
| G32 deck 3, D stairway | 9.30pm to the wee small hours |
| (Guests under the age of 18 are not permitted in G32) | |
| Terrace Pool Bar deck 8, D stairway | 9.00am to 10.00pm |
| Queen's Grill Lounge deck 7, D stairway, Grill guests only please | |
| 11.00am to 2.00pm to 6.00pm to close | |

FACILITIES AND RETAIL

| | |
|---|--------------------------------------|
| Voyage Sales | 9.00am to 12.00pm & 3.00pm to 6.00pm |
| Canyon Ranch | 8.00am to 8.00pm |
| Bookshop & Library | 9.00am to 6.00pm |
| Clarendon Fine Art | 10.00am to 10.00pm |
| Images Photo Gallery | 10.00am to 10.00pm |
| Images Photo Shop | 10.00am to 3.00pm |
| Mayfair Shops | 10.00am to 10.00pm |
| Empire Casino | Cashier: 10.00am Tables: 11.00am |
| Tour & Travel Office | 9.00am to 12.00pm & 3.00pm to 5.00pm |
| Internet Manager | 9.00am to 12.00pm, 2.00pm to 5.00pm |
| | & 8.00pm to 10.00pm |
| Medical Centre | 9.00am to 11.00am & 4.30pm to 6.30pm |
| ..(For medical emergencies only please dial 911 or 999) | |

UNITED KINGDOM IMMIGRATION INSPECTION FOR ALL GUESTS

In order to facilitate our clearance into the United Kingdom, an Immigration Officer will be conducting an on board inspection, whilst we are at sea, prior to our arrival in Southampton.

The Inspection will take place as follows:

DECKS 6, 8 AND 11

Today, Thursday 30 August 2012
Britannia Restaurant, deck 3, C Stairway
9.30am to 12.00pm and 2.30pm to 4.30pm

DECKS 9, 10, AND 12

Tomorrow, Friday 31 August 2012
Britannia Restaurant, deck 3, C Stairway
9.30am to 12.00 and 2.30pm to 4.30pm

Please bring your passport and your QUEEN MARY 2 identity card with you to the inspection and enter the Britannia Restaurant on Deck 3 Stairway C, to be checked off before you proceed through the Inspection process. Please be advised that all guests are required to attend the United Kingdom Immigration inspection, regardless of nationality and whether you are going ashore or remaining on board in Southampton. We respectfully ask you to attend this inspection promptly to ensure a smooth operation. We thank you for your co-operation in this important matter.

TONIGHT'S DRESS CODE: FORMAL

Tuxedo, dinner jacket or formal dark suit with tie for the gentlemen; evening dress or other evening attire for the ladies. Please note that the Formal Dress code applies from 6.00pm this evening. Out of respect for your fellow guests, the dress code will be enforced. The Kings Court provides an alternative for those guests who prefer a more relaxed evening attire. Shorts and jeans are not permitted in the Chef's Galley, Lotus, Carvery or La Piazza à la carte dining venues after 6.00pm

CUNARD WHITE STAR LUGGAGE SERVICE

You are able to make arrangements to have "White Star Luggage Service" to transport your luggage home directly from QUEEN MARY 2 in Southampton. This service is provided through DHL for guests disembarking in Southampton 4 September 2012. To register and apply for this service, please speak to our White Star Luggage Representative who will be available at the White Star Luggage desk located on Deck 2, Stairway B, Starboard side by the Royal Theater from 10.30am – 12.00pm & 3.30pm – 5.00pm on 30 August 2012. All DHL Arrangements for Guests disembarking in Southampton on 4 September 2012 need to be made by 12.00pm on Friday 31 August 2012.

LAUNDERETTES

All users of the guest launderettes are kindly requested not to leave their laundry in the machines for long periods of time, but to take it out shortly after the washing or drying cycle has finished. It is also requested that users of the guest launderettes be mindful of disturbing guests in adjacent staterooms. Thank you for your co-operation.