



DAILY PROGRAMME

QUEEN MARY 2

VOYAGE NUMBER: M220

Sunday 2 September 2012

Tonight's Dress Code: Formal

Ladies: Evening dress or other formal attire.

Gentlemen: Tuxedo, black tie or dark suit.

AT SEA EN ROUTE TO SOUTHAMPTON

TIME CHANGE

Please be advised that today at midday the ships clocks will be SET FORWARD BY ONE HOUR. Please set your watches FORWARD at 12 noon today, Sunday 2 September.



FROM THE NAVIGATOR

As QUEEN MARY 2 continues along her Great Circle track towards Bishop Rock, she will pass over the Porcupine Abyssal Plain in the North Atlantic Ocean.

This brings QUEEN MARY 2 closer to the end of her Great Circle track where she will commence steering rhumb line courses again.

SUNRISE AND SUNSET

Sunrise: 6.07am / Sunset: 7.59pm

NAUTICAL FACT OF THE DAY

HOW LONG IS A FATHOM?

A fathom is the unit of measurement traditionally used when referring to the depth of the sea or, in some cases, the length of ropes and cables. The word comes from the old English faedm, meaning to embrace, and is a measurement across the outstretched arms of a man, approximately six feet in a man of average size; the length of a nautical fathom is therefore six feet, roughly 2 metres.

TONIGHT IN THE ROYAL COURT THEATRE
THE SPECTACULAR
PRODUCTION SHOWS

Apassionata

FEATURING THE ROYAL CUNARD
SINGERS & DANCERS

A dance extravaganza of exciting styles of dance from around the world! From Glenn Miller's Swing to the tantalising Argentinian Tango this show features some of the most incredible dances ever seen at sea! With The Royal Court Theatre Orchestra directed by Musical Director, Joey Mix. Presented by your Entertainment Director Keith Maynard.

At 8.45pm and 10.45pm
Royal Court Theatre ?
decks 2 & 3, B stairway



INTERDENOMINATIONAL CHURCH SERVICE

An Interdenominational Sunday church service will be held in the Royal Court Theatre with Captain Chris Wells. Donation boxes for Seafarers' Charities will be placed outside the Deck 2 entrances to the Royal Court Theatre.

At 11.00am Royal Court Theatre ? decks 2 & 3

MURDER MYSTERY

"THE MURDER OF THE MASTER MARINER AT MIDNIGHT ON A MISTY MONDAY IN THE MID-ATLANTIC WITH A MAYAN MACHETE."

QUEEN MARY 2 presents "The Nearly Useful Theatrical Company" in a Sherlock Holmes Murder Mystery, name that tune. "The murder of the master mariner at midnight on a misty Monday in the mid-Atlantic with a Mayan machete." (Possible PG rated and definitely NOT recommended for lovers of good entertainment!) Presented by Entertainment Director, Keith Maynard, with your Entertainment Team.

At 2.30pm Royal Court Theatre ?, decks 2 & 3

TONIGHT IN THE QUEENS ROOM



Put on your favourite hat and join us from 9.45pm tonight in the Queens Room for the Royal Ascot Ball. Featuring the Queens Room Orchestra under the direction of Terry Quinn, featuring vocalist Michel Chartier Hosted by your Social Hostess, Melanie Jones.

In Today's

DISCOVER...

...try something new

Huge
Clothing
Sale



History
Of
Impressionism



Champagne
Afternoon
Tea

TODAY'S ACTIVITIES

Time	Activity	Location
6:00am	CATCH UP WITH KEITH TV show with your Entertainment Director, Keith Maynard TV Ch. 41 (repeated continuously until 12:00pm) 8:00am Power Deck walk - 1 mile brisk walk & talk. Previous sign-up required.	Power Deck
8:00am	CANYON RANCH FITNESS Meet at the Canyon Ranch SpaClub Gym.	Canyon Ranch SpaClub Gym
8:30am	CATHOLIC MASS	Illuminations 7, deck 3, A or B stairway (until 9:00am)
9:00am	CROSSWORD & QUIZ AVAILABLE	Library, deck 8 forward
9:00am	ANGELICAN/EPISCOPALIAN - EUCHARIST SERVICE	Connexions Room 5, deck 2, A stairway (until 9:45am)
9:00am	CANYON RANCH FITNESS Morning Stretch - We all need a flexible body. Previous sign up required.	Queens Room 7, deck 3, D stairway (until 9:30am)
9:30am	BEGINNERS' BRIDGE CLASS	Atlantic Room, deck 11, A stairway (until 10:15am)
9:30am	BEAT THE GOALIE TOURNAMENT	Sport Court, deck 13 Sports Court, B stairway. (until 10:15am)
9:45am	STUDY: SEMINAR Facebook: introduction to social networking.	Connexions Room 6, deck 2, A stairway (until 10:30am)
10:00am	RADA WORKSHOP "Methods of Storytelling" Today, the finale of creating your Cunard tales! Some movement is required, suitable footwear is advised.	Queens Room, deck 3, D stairway (until 10:45am)
10:00am	WATERCOLOUR ART CLASS	With instructor Hope Friedland There will be a one-time fee of \$35 for supplies. Numbers are limited to 25 guests.
10:00am	TALENT SHOW SIGN UP & REHEARSAL Now is your time to shine! Sign up for this afternoon's special guest talent show. With the Entertainment Staff.	Kingston Room, deck 1, C stairway (until 10:30am)
10:00am	CANYON RANCH LECTURE Foot Care Clinic. Do you suffer from back pain? Is sitting down or standing up uncomfortable? Do your joints cause you to suffer? Is Poor posture a real problem?	Winter Garden, deck 7, B stairway (10:45am)
10:00am	CUNARD INSIGHTS LECTURE Recorded and broadcast on TV Ch. 42 from 5:00pm onwards	'Tony Bennett - The Good Life'. Celebrating 65 years of the art of illumination 7, deck 3, A or B stairway (until 10:45am)
10:00am	DOUBLE YOUR POINTS PROMOTION Empire Casino, deck 2, B or C stairway (until 12:00pm)	Empire Casino, deck 2, B or C stairway (until 12:00pm)
10:00am	CANYON RANCH FITNESS	Platters - all levels. Fitness pass and previous sign-up required.
10:30am	SOLO TRAVELLERS' MORNING COFFEE An informal gathering Hosted by your Gentlemen hosts.	Knightsbridge Room, deck 1, C stairway (until 10:45am)
10:30am	MORNING TRIVIA	Golden Lion Pub, deck 2, C stairway
10:30am	INTERMEDIATE BRIDGE CLASS	Atlantic Room, deck 11, A stairway (until 11:15am)
10:30am	TABLE TENNIS TOURNAMENT	Pavilion Pool Area, deck 12, B stairway (until 11:15am)
10:30am	BINGO TICKET SALE	At the Empire Casino and Outside Queens Room (until 1:30pm)
10:50am	PREMIER LEAGUE FOOTBALL Liverpool Vs. Arsenal	Golden Lion Pub, deck 2, C stairway
11:00am	STUDY: NEXT STEPS WORKSHOP Apple's iPhoto #2: creating Calendars, Slideshows, Books & Cards. Sign up 15 minutes before class. A \$25 fee applies.	Connexions Room 6, deck 2, A stairway (until 12:00pm)
11:00am	ART TALK: HISTORY OF IMPRESSIONISM The Gallery, deck 3L (std), C stairway (until 11:45am)	The Gallery, deck 3L (std), C stairway (until 11:45am)
11:00am	SCARF TYING CLASS With your Social Hostess Melanie. Please bring your own square shaped scarf	G32, deck 3, D stairway (until 11:45am)
11:00am	INTERDENOMINATIONAL CHURCH SERVICE Interdenominational service with Captain Chris Wells. Donation will be placed outside the deck 2 entrances of the Royal Court Theatre	Royal Court Theatre 7, decks 2 & 3, B stairway (until 11:45am)
11:00am	CAN'T COOK, WON'T COOK! Join your Executive Chef Nicholas Oldroyd and Executive Sous Chef Roger Borra as they present QUEEN MARY 2's version of 'Can't Cook, Won't Cook!'	The Boardroom, deck 9, A stairway (until 11:45am)
11:15am	QUIZ CORNER	Chart room, deck 3, C stairway (until 12:00pm)
11:15pm	BOOK SIGNING: WILL FRIEDWALD	Bookshop, deck 8, A stairway
11:30am	SHUFFLEBOARD TOURNAMENT	Deck 13 Port/Starboard Side, B stairway (until 1:15pm)
12:00pm	EIGHT BELLS	Grand Lobby, deck 3, C stairway
12:00pm	NAVIGATIONAL ANNOUNCEMENT Public address system.	Public address system.
12:00pm	TIME CHANGE Please be advised that today at midday the ships clocks will be 5 FORWARD at noon today, Sunday 2 September.	Empire Casino, deck 2, B or C stairway
1:00pm	LINE DANCE CLASS	Queens Room 7, deck 3, D stairway (until 2:30pm)
1:15pm	LUNCHTIME MELODIES With pianist Russell Holmes.	Chart Room, deck 3, C stairway (until 2:00pm)
1:30pm	POOLSIDE MUSIC WITH SERIOUS SOUND	Pavilion Pool, deck 12, B stairway. (until 2:30pm)
1:45pm	SNOWBALL JACKPOT BINGO Play today's bingo session for a chance to win a Dinner for Two one of the a la carte restaurants!	Queens Room 7, deck 3, D stairway (until 2:30pm)
2:00pm	CANYON RANCH FITNESS	Knightsbridge Room, deck 1, C stairway (until 2:45pm)
2:00pm	CANYON RANCH LECTURE The ANSR: To Your Anti-Aging and Acne Concerns.	Connexions Room 5, deck 2, A stairway (until 2:45pm)
2:30pm	WATERCOLOUR ART CLASS There will be a one-time fee of \$35 for supplies. Numbers are limited to 25 guests.	Chaisea Room, deck 1, B stairway (until 4:30pm)
2:30pm	FRIENDS OF BILL W.	The Boardroom, deck 9, A stairway (until 3:15pm)
2:30pm	DUPPLICATE BRIDGE TOURNAMENT	Atlantic Room, deck 11, A stairway (until 4:30pm)
2:30pm	HOSTESS CORNER: NEEDLEWORK & KNITTING Join Social Hostess, Melanie for an informal get-together with your own projects. Please note: this is not a class.	Champagne bar, deck 3, Grand Lobby (until 3:30pm)
2:30pm	QUICK CRICKET TOURNAMENT Deck 13 Sports Court, B stairway (until 3:15pm)	Deck 13 Sports Court, B stairway (until 3:15pm)

DISCOVER...

...try something new

In today's Discover...exploring ways to further expand your enjoyment of your voyage. Why not try your luck at the variety of games in the Empire Casino, indulge in a fabulous massage at Canyon Ranch, or splash out at the Mayfair shops huge clothing sale!

SIR SAMUEL'S

Wander over to Sir Samuel's on deck 3 for a wide variety of coffees and speciality drinks. When the same old coffee just won't do, Sir Samuel's has something for every taste- whether you want sweet or savoury, hot or cold, alcoholic or non. Light snacks are available during the day.

CHAMPAGNE AFTERNOON TEA

Afternoon tea is a quintessentially British experience which Cunard has served for many years on some of the world's greatest ocean liners. In association with Veuve Clicquot and Twinings, Cunard is delighted to offer an enhanced afternoon tea experience, where style and quality combine for an afternoon to remember. If you wish to take part in this exclusive event today, please call the Commodore Club on 29000 or alternatively contact any of our bar staff. Space is limited for these exclusive events, advance booking is recommended. Prices begin at \$27.50 per guest.



HERITAGE CORNER STAR STRUCK



Under the name of Colonel Warden, Winston Churchill himself crossed the Atlantic four times on *QUEEN MARY*, her speed and reliability being vital to his safe passage. In May 1943 he sailed to New York to meet President Roosevelt and set the date for the Allied invasion of Europe. Later that year he steamed for Halifax to attend the Quebec conference that planned the detail of D-Day. In 1944, he made a two way crossing: although the tide of the war was turning for both him and the country, he learned of the first V2 bomb attack on London while at sea.

QUEEN MARY 2 HUGE CLOTHING SALE

Today the Mayfair Shops are reducing huge amounts of clothing by up to 75%, including brands such as Joseph Ribkoff, Betty Barkley, Gina Bacconi and many more. Plus we have 50% off Ralph Lauren, Paul Burman and much more menswear also. Stock is limited and once gone it is gone. **Mayfair Shops, deck 3, Grand Lobby**



NORWEGIAN FJORDS AND NORTH CAPE EXPLORER VOYAGES!

Europe's northern water offer an array of cultural riches, historic discoveries and spectacular landscapes. The further north you venture, the more rugged and dramatic the scenery becomes.

Norwegian Fjords and North Cape Explorer voyages with *QUEEN MARY 2*:

16 nights - 08 June 2013

Southampton, Hamburg, Bergen, Andalsnes, Trondheim, Honningsvaag, Tromso, Alesund, Stavanger, Hamburg, Southampton.

7 nights - 13 July 2013

Southampton, Stavanger, Olden, Geiranger, Bergen, Southampton.

11 nights - 22 August 2013

Southampton, Hamburg, Bergen, Geiranger, Olden, Stavanger, Hamburg, Southampton.

Transatlantic crossing combination is available for New York roundtrip Grand Voyages. Hamburg roundtrip voyages are also available to Norway.

For more details, visit Barrie or Dragana at the Voyage Sales Office on Deck 2, opposite the Royal Court Theatre (Port side) or telephone extension 22347 & 22339 to arrange a private appointment.



LAST CHANCE FOR FORMAL PORTRAITS

Tonight is your last opportunity to have your formal portrait taken, your chance to share a memorable moment with those you love. We'll be ready for you on decks 2 and 3, C stairway. Remember there is no obligation to buy. **Time: 5.00pm - 6.15pm, 7.30pm - 8.45pm, 9.45pm - 10.45pm Deck 2 & 3**



'GET THE PICTURE!'

Can't make up your mind which voyage photos to purchase? You don't have to with 'Get the Picture!' Take them home with you, in a digital and watermarked format and from the comfort of your own home select and unlock the photos of your choice. Various packages available starting at only \$149.95. Visit the Photo Gallery on deck 3L for more details.

FUN DAY AT SEA

Join your Cunard Casino staff today for a fun afternoon at sea in the Empire Casino between 1.00pm and 3.30pm. Only \$5 to play in one of our Casino tournaments: Slot, Blackjack and Roulette tournament and you can win great prizes. Come and join us, we'll have fun and who knows? You may be our next Casino Champion. Grand Finals at 4.00pm.

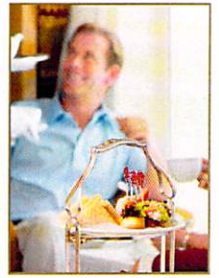


SELF HELP EXPRESS CHECK OUT IN SOUTHAMPTON

Sign up for express disembarkation at the Purser's Office. You must be able to carry all of your own luggage. **Pursers Office, deck 2, Grand Lobby**

TRADITIONAL & INDULGENT

One of the simplest, yet traditional, indulgences available on all Cunard vessels is our famous white gloved afternoon tea. QUEEN MARY 2's fabulous Queens Room, another Cunard signature feature, is the largest ballroom at sea. It features a dramatic high ceiling (more than seven metres high), crystal chandeliers, sweeping ocean views on both sides of the ship and the largest dance floor at sea. Designed for dancing, cocktail parties and of course, traditional English afternoon teas complete with finger sandwiches and freshly baked scones with jam and cream. Be sure to treat yourself this voyage, where you can listen to the string quartet, pianist or harpist, whilst taking in the ocean views. Indulgence at its best.



CANYON RANCH SPA SPECIALS

CANYON RANCH MASSAGE

50 minutes 8.00am, 5.00pm 6.00pm and 7.00pm usually \$143.

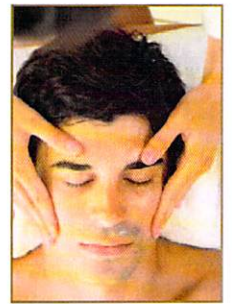
LUXURIOUS BODY EXFOLIATION

Many to choose from. 50 minutes \$99 usually \$154.

GENTLEMEN'S DEEP CLEANSING FACIAL

50 minutes \$99, usually \$154

Visit us on Decks 7 & 8, or press the Spa button on your stateroom telephone.



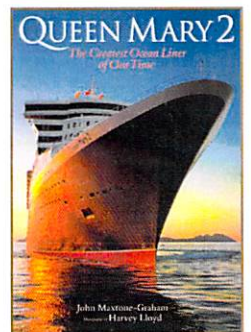
HISTORY OF IMPRESSIONISM FEATURING SHERREE VALENTINE DAINES

Join Clarendon Fine Art as we delve into the mists of time to explore the origins of the French Impressionist movement, incorporating works by Monet, Degas and Pissarro followed by a feature on 'The Face of Modern British Impressionism' - Sherree Valentine Daines. Learn about the woman behind Britain's most recognisable, charming and uplifting artworks - her life, her inspiration and techniques. After the talk, view a fantastic collection of Sherree's latest Hand Embellished Limited Editions and Original Oil Paintings in the gallery. **At 11.00am in the Gallery, deck 3L (stbd), C stairway.**



QUEEN MARY 2 SOUVENIR BOOKS

The Greatest Ocean Liner of our Times, by maritime historian John Maxtone-Graham. Beautiful, colourful and an ideal coffee table book in hardback, also available in paperback for lighter carrying. QUEEN MARY 2 - The Birth of a Legend by Philip Plisson, photographer responsible for many of the fabulous photo posters on display and for sale. The QUEEN MARY 2 Book of Comparisons full of fascinating comparative information. Any of these and more would make an ideal souvenir to show your family and friends on your return home. **Available in the Bookshop, deck 8, A stairway**



WINE LINE...

To assist you in selecting the perfect wine to complement your fine dining experience this voyage we have a dedicated wine line. Simply telephone 22062 between 10.00am and 4.00pm everyday to speak with one of our knowledgeable sommelier who will be on hand to discuss your wine selection and take orders ensuring that your wine will be perfectly prepared for you.



TODAY'S ACTIVITIES

- 2.30pm **MURDER MYSTERY**
Royal Court Theatre ☞, decks 2 & 3, B stairway.
- 2.30pm **PREMIER LEAGUE FOOTBALL**
Southampton VS. Manchester United
Golden Lion Pub, deck 2, C stairway
- 3.00pm **ISTUDY NEXT STEPS WORKSHOP**
Adobe Photoshop Elements #2: Repair in an old photo, makeup & creating Panoramic pictures. Sign up 15 minutes before class. A \$25 fee applies.
ConneXions Room 6, deck 2, A stairway (until 4.00pm)
- 3.00pm **DARTS COMPETITION** 🎯
Golden Lion Pub, deck 2, C stairway (until 3.30pm)
- 3.00pm **CHAMPAGNE AFTERNOON TEA**
Space is limited for these exclusive events, advance booking is recommended, please call the Commodore Club on 29000. A nominal charge of \$27.50 plus 15% service per person will apply.
Winter Garden, deck 7, B stairway
- 3.00pm **TEXAS HOLD'EM TOURNAMENT**
Empire Casino, deck 2, B or C stairway (\$60 tournament fee)
- 3.00pm **CANYON RANCH LECTURE**
T-spheres Workshop- self relief from tight muscles and tension.
ConneXions Room 5, deck 2, A stairway (until 3.45pm)
- 3.00pm **CANYON RANCH FITNESS**
Calisthenics - Use your own body weight to exercise. Fitness pass and previous sign-up required.
Knightsbridge Room, deck 1, C stairway (until 3.45pm)
- 3.30pm **AFTERNOON TEA DANCE**
Featuring the Queens Room Orchestra.
Queens Room ☞, deck 3, D stairway (until 4.30pm)
- 3.30pm **BUFFET AFTERNOON TEA**
King's Court Restaurant, deck 7, B, C or D stairway
- 3.30pm **CUNARD INSIGHTS LECTURE**
Recorded and broadcast on TV Ch. 42 from 5.00pm onwards
'21st Century International Conflict And Cooperation Issues That Will Keep Diplomats Awake At Night.' Presented by Ambassador Walker.
Illuminations ☞, deck 3, A or B stairway (until 4.15pm)
- 3.30pm **COMPLIMENTARY GOLF COMPETITION** 🏌️‍♂️
35 yards chipping!! Places are limited.
The Fairways, deck 12, B stairway (until 4.15pm)
- 4.00pm **BOOK CLUB MEETING**
Discussion of this month's Book Club book, "Before I Go To Sleep", by S.J. Watson.
The Boardroom, deck 9, A stairway (until 4.45pm)
- 4.00pm **CANYON RANCH FITNESS**
Indoor cycling - raise your HR. Fitness pass and previous sign-up required.
Knightsbridge Room, deck 1, C stairway (until 4.45pm)
- 4.30pm **ISTUDY: NEXT STEPS WORKSHOP**
Apple's iMovie #2: create amazing slide shows using pictures, music and voice overs. Sign up 15 minutes before class. A \$25 fee applies.
ConneXions Room 6, deck 2, A stairway (until 5.30pm)
- 4.30pm **BAGGO TOURNAMENT** 🎱
Pavilion Pool Area, deck 12, B stairway (until 5.15pm)
- 4.30pm **AFTERNOON TRIVIA** 🎲
Chart Room, deck 3, C stairway (until 5.15pm)
- 4.45pm **HAT DECORATING SESSION**
A spread of supplies to decorate your hats for the Royal Ascot Ball tonight! Please note, this is not a class.
Chelsea Room, deck 1, B stairway (until 5.30pm)
- 5.00pm **FRIENDS OF DOROTHY LGBT**
Commodore Club (starboard side), deck 9, A stairway (until 5.45pm)
- 5.00pm **'LIVE @ 5' RADIO SHOW**
For requests or messages dial 23015. TV Ch. 41 (until 7.00pm)
- 5.00pm **3D FILM: 'WRATH OF THE TITANS'**
Illuminations ☞, deck 3, A or B stairway
- 5.00pm **GUEST TALENT SHOW**
Guests must attend earlier sign up and rehearsal to participate.
Queens Room ☞, deck 3, D stairway (until 5.45pm)
- 5.15pm **HARPIST FIONA MCGEE**
Chart Room, deck 3, C stairway (until 6.00pm)
- 5.15pm **PIANIST GEZA TOROCSIK**
Golden Lion Pub, deck 2, C stairway (until 6.00pm)
- 6.30pm **HARPIST FIONA MCGEE**
Chart Room, deck 3, C stairway (until 7.15pm)
- 7.15pm **SINGER AND PIANIST PATRICK PATTON**
Golden Lion Pub, deck 2, C stairway (until 8.00pm)
- 7.30pm **COCKTAIL PIANIST GEZA TOROCSIK**
Commodore Club, deck 9, A stairway (until 8.30pm)
- 7.30pm **HARPIST FIONA MCGEE**
Chart Room, deck 3, C stairway (until 8.30pm)
- 7.45pm **RADA: PASSION AND PIANO**
Join RADA as they present an evening of passionate poetry accompanied by pianist Russell Holmes.
Winter Garden, deck 7, B stairway (until 8.30pm)
- 8.00pm **3D FILM: 'WRATH OF THE TITANS'**
A decade after his heroic defeat of the monstrous Kraken, Perseus -- the demigod son of Zeus -- is attempting to live a quieter life as a village fisherman and the sole parent to his 10-year old son, Helius. Meanwhile, a struggle for supremacy rages between the gods and the Titans. Starring Liam Neeson, Sam Worthington, Ralph Fiennes. Directed by Jonathan Liebesman. Rated PG-13; 99 minutes.
Illuminations ☞, deck 3, A or B stairway
- 8.00pm **EARLY EVENING TRIVIA** 🎲
Hosted by the entertainment staff.
Golden Lion Pub, deck 2, B stairway (until 8.30pm)
- 8.00pm **FACE UP BLACKJACK**
Empire Casino, deck 2, B or C stairway
- 8.45pm **APASSIONATA**
Royal Court Theatre ☞ decks 2 & 3, B stairway (until 9.30pm)
- 9.00pm **DANCE MUSIC FOR ENTHUSIASTS**
Prerecorded music for your listening or dancing pleasure.
Queens Room ☞, deck 3, D stairway (until 9.45pm)
- 9.30pm **INTERNATIONAL BAND, SERIOUS SOUNDS**
G32, deck 3, D stairway (until 10.30pm)
- 9.30pm **SINGER AND PIANIST PATRICK PATTON**
Golden Lion Pub, deck 2, C stairway (until 10.00pm)
- 9.30pm **THE JAZZ CLUB**
Swing-along jazz favourites with the Mark Hodgson Trio.
Chart Room, deck 3, C stairway (until 12.30am)
- 9.45pm **ROYAL ASCOT BALL**
At approximately 10.45pm, enjoy a special floor show by our internationally acclaimed dance couple, Olena & Dan.
Queens Room ☞, deck 3, D stairway (until 12.00am)
- 10.00pm **NAME THAT TUNE 🎵 & KARAOKE**
From 10.00pm to 10.30pm join the Entertainment Staff for a fun musical knowledge quiz. Then it's time to throw your inhibitions overboard, take to the microphone and sing your heart out!
Golden Lion Pub, deck 2, C stairway (until late)
- 10.00pm **COCKTAIL PIANIST RUSSELL HOLMES**
Commodore Club, deck 9, A stairway (until 10.45pm)
- 10.30pm **3D FILM: 'WRATH OF THE TITANS'**
Illuminations ☞, deck 3, A or B stairway
- 10.30pm **DJ CHRIS ROCK N' ROLL 50S & 60S NIGHT**
G32, deck 3, D stairway (until 11.30pm)
- 10.45pm **APASSIONATA**
Royal Court Theatre ☞ decks 2 & 3, B stairway (until 11.30pm)
- 11.00pm **COCKTAIL PIANIST RUSSELL HOLMES**
Commodore Club, deck 9, A stairway (until 11.45pm)
- 11.30pm **INTERNATIONAL BAND, SERIOUS SOUNDS**
G32, deck 3, D stairway (until 12.30am)
- 12.00am **COCKTAIL PIANIST RUSSELL HOLMES**
Commodore Club, deck 9, A stairway (until 12.30am)
- 12.00am **BALLROOM AND LATIN DANCE MUSIC**
Queens Room ☞, deck 3, D stairway (until 12.30am)
- 12.30am **DJ CHRIS**
G32, deck 3, D stairway (until late)

All times and durations are subject to change. Some durations are dependant on participation.

SHIPBOARD INFORMATION

THE MOST FAMOUS OCEAN LINERS IN THE WORLD

RESTAURANTS

QUEENS GRILL, PRINCESS GRILL AND BRITANNIA CLUB

Breakfast.....	8.00am to 9.30am
Lunch.....	1.00pm to 2.30pm
Dinner.....	6.30pm to 9.00pm

BRITANNIA RESTAURANT

Breakfast.....	8.00am to 9.30am
Lunch.....	1.00pm to 2.30pm
Early Dinner.....	6.00pm, last order 6.30pm
Late Dinner.....	8.30pm, last order 9.00pm
Wine Line.....	10.00am to 4.00pm

pre-order your wine for the voyage by calling 22062.

TODD ENGLISH

A la carte charges apply. For reservations please dial 28026 between 10.00am & 4.00pm.

Lunch.....	1.00pm to 2.30pm
Dinner.....	6.00pm to 9.30pm

KINGS COURT BUFFET

Continental Breakfast.....	4.00am to 6.30am
Chef's Galley: Healthy Corner.....	6.30am to 10.30am
Full Breakfast.....	6.30am to 11.30am
Chef's Galley: Burger & Sandwich Station.....	11.30am to 3.00pm
Lunch.....	11.30am to 3.00pm
Afternoon Snack.....	3.00pm to 5.30pm
Buffet Dinner: Carvery.....	5.30pm to 11.00pm
Late Snack.....	11.00pm to 4.00am

BOARDWALK CAFE

Outside on deck 12, D stairway, open weather permitting.

Fast Food Grill Items.....	11.30am to 3.00pm
----------------------------	-------------------

KINGS COURT SPECIALITY A LA CARTE

A \$10 cover charge applies. For reservations please dial 25056.

Lotus.....	7.00pm to 9.00pm
------------	------------------

An Asian inspired tasting menu full of flavours from the east

La Piazza..... 7.00pm to 9.00pm
Fine Italian a la carte dining, our chefs prepare a fantastic Mediterranean feast.

Chef's Galley..... Demonstration begins at 7.00pm
This evening our chefs will explain and prepare popular Italian dishes. Please be advised that there is a minimum participation and as a courtesy to fellow guests please be on time. Bookings will close at noon today to enable preparation.

BARS AND LOUNGES

Commodore Club deck 9, A stairway.....	10.00am to late
Pavilion Pool Bar deck 12, B stairway.....	9.00am to 7.00pm
Winter Garden deck 7, B stairway.....	11.00am to 9.00pm
Champagne Bar deck 3, Grand Lobby.....	11.00am to 12.00am
Chart Room deck 3, C stairway.....	10.00am to late
Empire Casino Bar deck 2, C stairway.....	11.00am to close
Golden Lion Pub deck 2, C stairway.....	10.00am to late
Pub Lunch.....	11.30am to 2.30pm
Sir Samuel's (deck 3, C stairway).....	7.00am to 12.00am
G32 deck 3, D stairway.....	9.30pm to the wee small hours

(Guests under the age of 18 are not permitted in G32)

Terrace Pool Bar deck 8, D stairway.....	9.00am to 10.00pm
Queen's Grill Lounge deck 7, D stairway, Grill guests only please	11.00am to 2.00pm 6.00pm to close

FACILITIES AND RETAIL

Voyage Sales... 9.00am to 12.00pm & 3.00pm to 6.00pm
Canyon Ranch..... 8.00am to 8.00pm
Bookshop & Library..... 9.00am to 6.00pm
Clarendon Fine Art..... 10.00am to 10.00pm
Images Photo Gallery..... 10.00am to 10.00pm
Images Photo Shop..... 10.00am to 6.00pm
Mayfair Shops..... 10.00am to 10.00pm
Empire Casino..... Cashier: 10.00am Tables: 11.00am
Tour & Travel Office..... 9.00am to 12.00pm & 3.00pm to 5.00pm
Internet Manager..... 9.00am to 12.00pm, 2.00pm to 5.00pm
..... & 8.00pm to 10.00pm
Medical Centre..... 9.00am to 11.00am & 4.30pm to 6.30pm

..(For medical emergencies only please dial 911 or 999)

TONIGHT'S DRESS CODE: FORMAL

Tuxedo, dinner jacket or formal dark suit with tie for the gentlemen; evening dress or other evening attire for the ladies. Please note that the Formal Dress code applies from 6.00pm this evening. Out of respect for your fellow guests, the dress code will be enforced. The Kings Court provides an alternative for those guests who prefer a more relaxed evening attire. Shorts and jeans are not permitted in the Chef's Galley, Lotus, Carvery or La Piazza à la carte dining venues after 6.00pm

PLANNED MAINTENANCE & SHUTDOWN OF INTERNET SERVER

Tomorrow, 3 September essential maintenance will be carried out by our internet provider from 3.00pm until approximately 7.00pm. During this time, no internet services will be available. We apologise for this temporary loss of facility and any inconvenience caused.

STORAGE OF LUGGAGE IN SOUTHAMPTON

Guests who wish to store their luggage after disembarking the QUEEN MARY 2 in Southampton prior to their return voyage in the future may do so with our Port Agent in Southampton. Please register at the Purser's Office. The deadline for signing up for the Luggage Storage is today at 12.00pm (noon). The cost of this service is \$65.00 per bag for up to 30 days and an additional \$30.00 per bag for the next 30 days. This will be charged to your onboard account. You will be provided with a separate luggage tag and your luggage will be transported by the Port Agent to the Carnival UK storage facility until your return.

ROYAL COURT THEATRE ETIQUETTE

Out of consideration for all our guests it is not permitted to reserve seats in the Royal Court Theatre prior to showtime. The use of video and audio recording equipment is prohibited because of copyright reasons, and flash photography is not permitted for the safety of our performers. Please be aware that this evening's performance will include atmospheric effects. Thank you very much for your cooperation.

DECK CHAIRS

Deck chairs operate on a first-come, first served basis and cannot be reserved. For the consideration of all guests, please ensure you take your belongings when leaving a deck chair for a period of time, or they will be removed and taken to the Purser's Office for collection.

WWW.WEARECUNARD.COM

Have you visited the Cunard blog yet? If you want to keep in touch with the latest news and hear from Cunard officers, crew, entertainers and guest lecturers, visit the Cunard Blog and remember to post your comments and questions. Remember: wearecunard.com.

LAUNDERETTES

All users of the guest launderettes are kindly requested not to leave their laundry in the machines for long periods of time, but to take it out shortly after the washing or drying cycle has finished. It is also requested that users of the guest launderettes be mindful of disturbing guests in adjacent staterooms. Thank you for your co-operation.